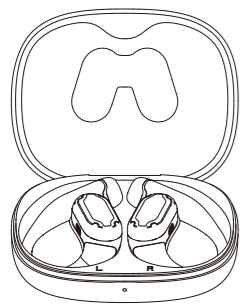


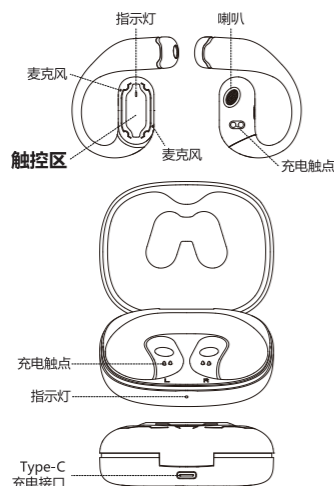
### 开放式无线蓝牙耳机



使用指南及保修说明  
Operating instructions and Warranty description

55mm

#### 示意图



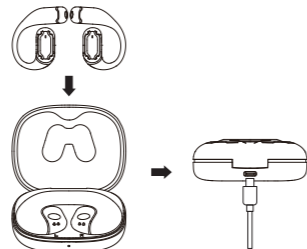
#### 充电

##### 耳机充电

耳机放入充电盒，耳机开始充电。充电过程中，耳机红灯常亮，充电盒蓝灯长亮。充满后，耳机红灯熄灭，充电盒蓝灯熄灭。使用过程中，若出现提示音“电量低”，表示耳机电量低，此时需要给耳机充电。

##### 充电盒充电

将充电盒连接Type-C充电线，充电过程中，指示灯红灯闪烁，充满后，指示灯红灯常亮。



**!** 本产品的可充电电池必须妥善处理，以便回收利用。请不要将电池放入火中，以免引起爆炸。

#### 开关机

##### 开机

- 1: 充电盒开盖，耳机开机。
- 2: 长按触控区3秒。

##### 关机

- 1: 将耳机放回充电盒，合上盖子。
- 2: 长按触控区5秒。（操作随意一台，2个耳机都会关机）
- 3: 5分钟内无连接蓝牙，耳机关机。

#### 蓝牙配对

**自动配对:** 充电盒开盖，左耳和右耳将进行互配，当只有一个耳机指示灯红蓝灯交替闪烁而另一个耳机灯灭时，打开设备上的蓝牙（手机、电脑）搜索名称“Z3”，点击“Z3”，成功后退出。  
**手动配对:** 4击左/右触摸键，当一个耳机灯灭时，则配对成功。

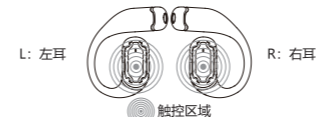
注：当耳机连接过相同设备后，再次使用将自动连接。

#### 恢复出厂设置

##### 开机，未连接蓝牙

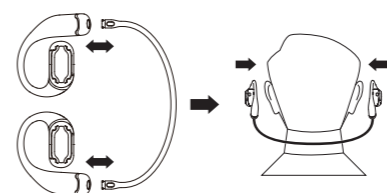
5击耳机触控区（左耳/右耳需要分开操作），清除配对连接的所有信息后耳机关机。

#### 功能说明



功能	耳机状态	操作
音量 +	蓝牙已连接	双击左耳
音量 -		双击右耳
下一曲	音乐状态	长按左耳2秒“嘀”声后松手
上一曲		长按右耳2秒“嘀”声后松手
暂停/恢复播放	来电时	单击左耳或右耳
接听/挂断电话		长按左耳或右耳2秒
拒接电话	蓝牙已连接	3击左耳或右耳
手机/耳机听筒通话切换		
语音控制		

#### 后挂绳说明



注：后挂绳为选配

#### 指示灯

充电盒充电中:	红灯闪烁
充电盒完成充电:	红灯长亮
充电盒低电状态:	蓝灯闪烁
给耳机充电时充电盒状态:	蓝灯长亮
耳机充满电时充电盒状态:	指示灯熄灭

#### 产品参数

型号: Z3  
蓝牙耳机版本: 5.4  
蓝牙距离: ≤10m  
充电盒输入: 5V/220mA  
重量: ≈68g

单耳机电池容量: 50mAh  
充电盒电池容量: 300mAh  
单耳机音乐续航: ≥6h@60%音量  
充电盒满电时长: ≈1.5h  
耳机满电时长: ≈1.5h

#### 维护与保养

- 请避免产品淋雨或受潮，否则可能导致火灾或触电的危险。
- 如何长时间不使用，请至少一个月充满一次电。
- 请不要私自拆装产品上任何部件，如发现产品有缺陷立即停止使用，联系销售方进行售后处理。
- 使用后请将耳机表面的汗水擦拭干净，特别是充电磁吸位置，要及时处理干净，防止汗水、盐水腐蚀充电口，影响产品寿命。
- 产品远离火源、热源、冷冻源、化学品、严禁暴力撞击和拆装、挤压产品。
- 请勿将磁条卡（如银行卡、电话卡等）长期接触本产品，否则可能导致磁条卡被磁场损坏。
- 为避免意外吞食造成危险，产品存放请远离儿童和宠物。
- 未成年人应在监督下使用产品。

合格證  
Q.C.Passed

#### 产品保修卡

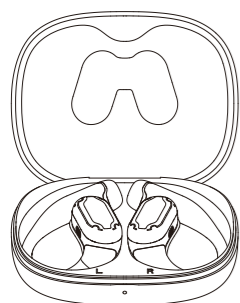
该卡为产品保修凭证，请妥善保管

产品名称:	产品型号:
购买日期:	客户名称:
联系方式:	

#### 产品维修记录

日期	不良现象	方案

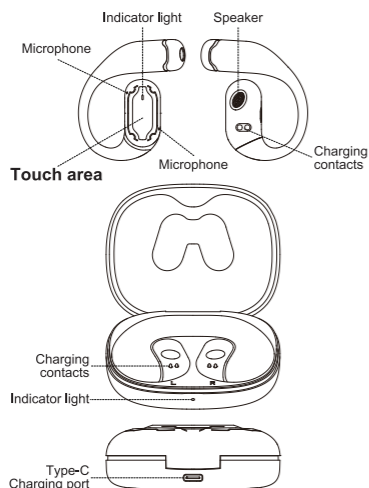
### OPEN EAR BLUETOOTH EARPHONES



Instructions for usage and warranty  
Operating instructions and Warranty description

55mm

#### Schematic diagram



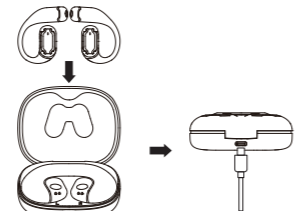
#### Charge

##### Earphones

The earphone is put into the charging box and the earphone starts charging. Charging process, the earphone red light is always on, the charging box blue light is always on, after full, the earphone red light off, the charging box blue light off. In the process of use, if there is a tone "low battery", that the earphone power is low, this time you need to charge the earphone.

##### Charging box

Connect the charging box to the Type-C charging cable, during the charging process, the indicator red light flashes, after full, the indicator red light is always on.



**!** The rechargeable battery of this product must be disposed of properly for recycling. Do not put the battery into fire as this may cause an explosion

#### Power On/Off

##### Power On

- 1: Open the charging box and the earphones will turn on.
- 2: Press the Touch area for 3 seconds.

##### Power Off

- 1: Put the earphones into the charging box, close the charging box
- 2: Press the Touch area for 5 seconds. (Operate one machine at will, both earphones will shut down)
- 3: No Bluetooth connection within 5 minutes, power off.

#### Bluetooth pairing

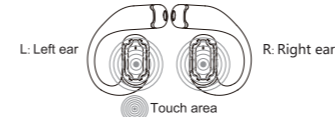
**Auto pairing:** Open the charging box, and the left and right earphones will be paired. When only one earphone indicator light flashes red and blue alternately while the other earphone light is off, turn on Bluetooth (phone, computer) on the device to search for the name "Z3", click "Z3", and successfully connect before exiting.  
**Manual pairing:** 4-clicks the left/right Touch area, and when one of the earphone lights goes out, pairing is successful.

**Note:** The same device will automatically connect when used again.

#### Restore Factory Settings

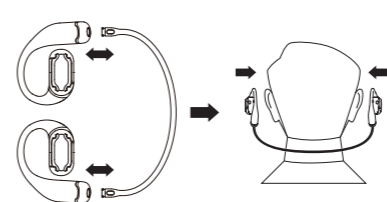
**Power on, Bluetooth not connected**  
5-clicks earphone Touch area (Left/Right ears need to be operated separately)

#### Functional Description



Function	Earphone status	Operation
Volume +	Bluetooth connected	Double click on the Left ear
Volume -		Double click on the Right ear
Next song	Music status	Press the left ear for 2s & let go after hearing a beep
Previous song		Press the right ear for 2s & let go after hearing a beep
Pause/Resume	Phone calls in	Click on the Left or Right ear
Answer the call / Hang up		Press Left or Right ear for 2s
Decline the call	Bluetooth connected	3-clicks on the Left or Right ear
Phone / Bluetooth earphone switch		
Voice control		

#### Rope Description



Note: Rope is optional

#### Indicator

Charging box charging	Red light flashing
Charging box finished charging	Red light on
Charging box low battery	Blue light flashing
Charging box status when charging earphones	Blue light on
Charging box status when the earphones is fully charged	Light off

#### Product parameter

Model: Z3  
Bluetooth: 5.4  
Distance: BT≤10m  
Input: 5V/220mA  
Weight: ≈68g

A earphone battery: 50mAh  
Charging box battery: 300mAh  
Earphone music play: ≥6h@60% volume  
Charging box charging time: ≈1.5h  
Earphones charging time: ≈1.5h

#### Care and cleaning

- Avoid product exposure to rain or moisture, as it may pose a risk of fire or electric shock.
- If not used for a long time, please fully charge once a month.
- Do not disassemble or assemble products without authorization. If any problems are found, contact after-sales service for assistance.
- After use, please wipe off the sweat on the surface of the earphones, especially the charging port. It should be cleaned in a timely manner to prevent salt from corroding the charging port and affecting the product's lifespan.
- The product should be kept away from sources of fire, heat, freezing, chemicals, and violent impact, disassembly, and squeezing are strictly prohibited.
- Do not expose magnetic stripe cards (such as bank cards, telephone cards, etc.) to this product for a long time, as it may be damaged by the magnetic field.
- To avoid danger caused by accidental ingestion, products should be stored away from children and pets.
- Minors should use the product under supervision.

Certificate of conformity  
Q.C.Passed

#### Product warranty card

This card is a product warranty certificate, please keep it properly

Product name:	Product model:
Purchase date:	Clients name:
Contact:	

#### Product maintenance records

Date	Bad phenomenon	Solution